

CREATE A SCOPE AND PRE-WIRE ECONX

1. Create a Scope
2. System Inclusions
3. Pricing
4. Pre- Wire – Econx Location
5. Pre – Wire – Commonly asked questions
6. Support Options



CREATING PROJECT SCOPE

1

Econx provides the ability to create a customized project scope for every installation. This smart online tool automatically generates and emails a project scope to electricians which includes a pre-wire schedule. All other requests are reviewed before forwarding a project scope.

To get started

Visit our website www.econx.co.nz

Click the button

[Make it smart by designing your Econx system here](#)

Complete form and click Submit

Your scope will be forwarded to you if (I'm am an Electrician) is selected. All other scope enquires will be review before forwarding. Scopes can be edited by contacting Econx.



SYSTEM INCLUSIONS

An Econx - ECO - 003 hardware includes the following

- 1 x Metal enclosure
- 1 x Powder coated Lid complete with LED indicators
- 9 x 240volt relays – Current range 22amps – 10amps resistive loads only
- 5 x Infra Red Outputs for Heat Pump Control
- 9 x Low Voltage inputs and outputs for access and blind control
- 14 x Inputs for security sensors, smoke detectors or temperature sensors
- 2 x 5 Button Radio Remotes
- 2 x IR emitters for heat pump control
- 1 x Door Reed switch
- 1 x Radio Antenna
- All software and features

Items not typically supplied – Alarm sensors, smoke sensors, sirens and sounders, alarm battery and relays for blinds, windows and irrigation.



PRICING – NEW HOMES

Econx is typically supplied and installed by electricians and is purchased through most electrical wholesalers. Econx replaces the need for all other controls creating a simpler and smarter home.

THE REAL TOTAL COST OF AN ECONX SYSTEM

Econx system (Trade Price)	- \$ 1,990.00 incl gst
Less an Alarm system	-
Less Alarm upgrades - Remotes and App control	-
Less Wi-Fi controls for heat pumps	-
Less Under tile or in-floor heating controls	-
Less Lighting sensors for Hallways and...	-
Less Towel Rail timers	-
Less Electric Blind Controllers	-
Less Driveway lighting Sensors and Wiring	-
And more.....	-

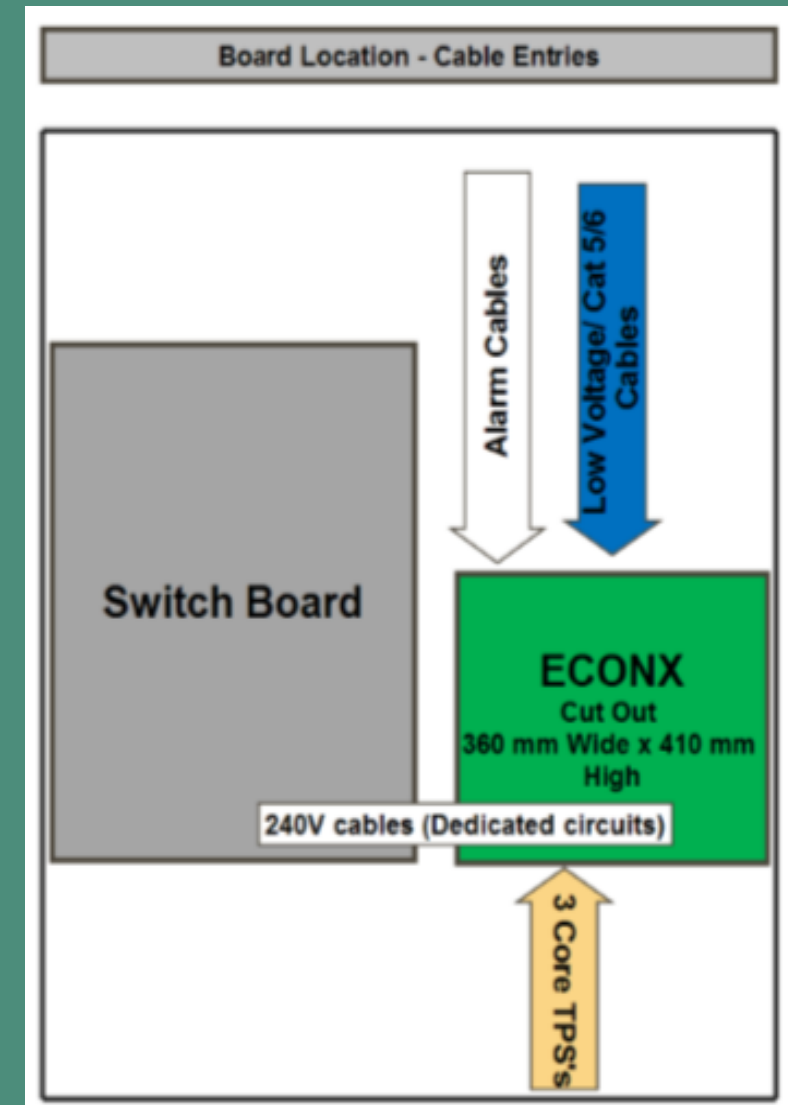
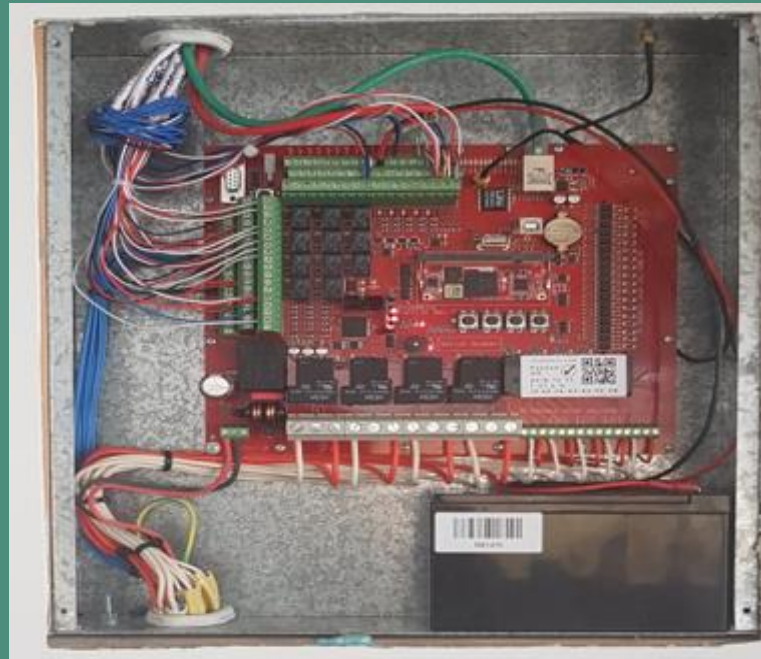
THE REAL ADDITIONAL COST of an **ECONX SMART HOME System** with long terms savings and benefits - **\$ 0.00 - \$1200.00 incl gst**



PRE – WIRE

Before you start a pre-wire we recommend creating a **Project Scope**. This will provide pre-wiring requirements.

1. Install Econx Cabinet beside the switch board, We recommend installing on the RHS where possible.
2. Drill a hole between the Switchboard and Econx Cabinet.
3. Install Bushes for cable entry
4. Pre-wire as per **Project Scope**.



PRE – WIRE COMMONLY ASKED QUESTIONS

5

Garage Door Reed Switch - This must be installed to ensure door status can be provided to users, the reed switch can also be used to trigger lighting and other features.

Light switches, where auto/man/off is NOT available in the selected range of flush gear, you can either

1. Wire the Econx relay in parallel with light switch – this may cause confusion with client
2. Install a auto/man/off mech in the garage by the Econx panel or in a discrete and practical location
3. Install a LV press mech at switch and wire loads directly into Econx . This provides app and manual control.

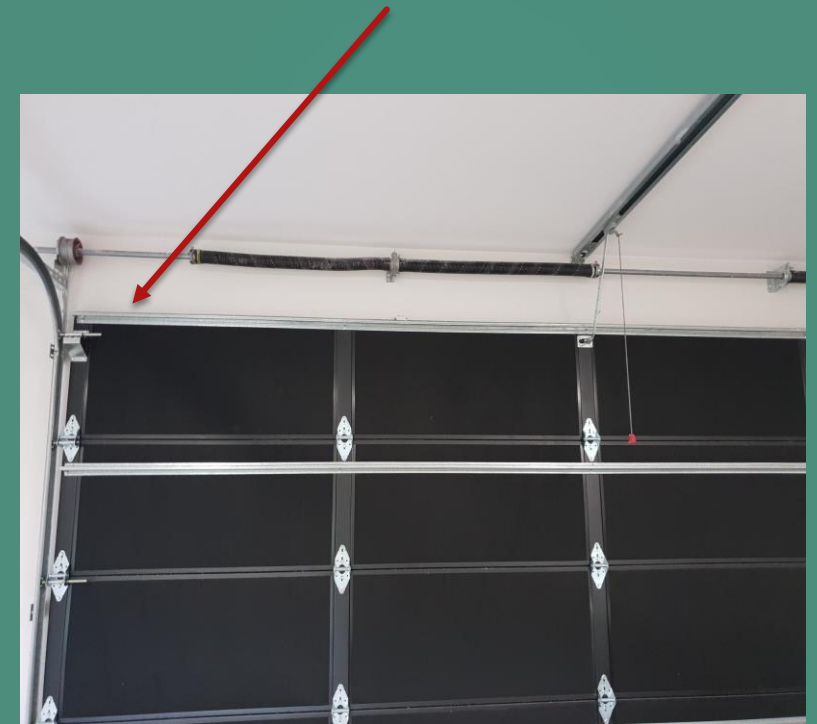
Heat Pumps Any brand with a remote can be controlled, run cable to indoor unit, install IR emitter behind cover. Where ducted systems are installed a separate IR controller must be installed, these are typically installed in a cupboard or ceiling cavity

Internet Connect Econx directly to the Router

Cameras (Panasonic Only) – These DO NOT need wiring to the Econx panel

Temperature Sensors - Econx operates with Devi indoor, floor and outdoor sensors. Hot wire floor probes are also compatible with Econx

Suggested Reed switch Location



Garage Door

SUPPORT OPTIONS

Econx provides a large range of services to assist with installations

1. Quoting Assistance for trade customers
2. Product Training
3. On-site and Remote support
4. Pre-Configurations – Order a Econx pre- configured.
5. Sub- Contracted installations (Selected areas throughout NZ)
6. Supplied and installed options. (Selected areas throughout NZ)

More wiring Information

- a) Wiring diagrams are supplied with your Econx system and are available at www.econx.co.nz/technical-information
- b) Step by Step Fit Off and Configuration Guides are available at www.econx.co.nz/technical-information



Support Contact

Anthony Tucker
sales@econx.co.nz
PH 0272 666 329